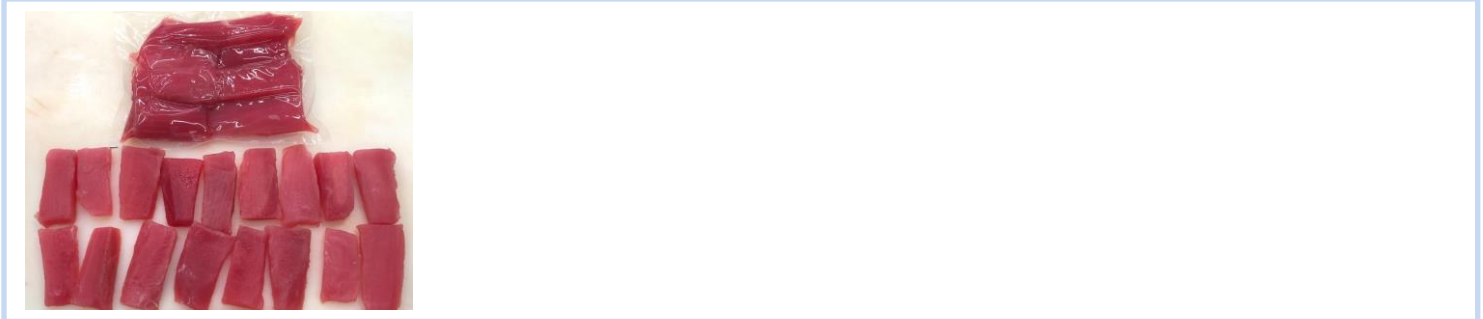




Product Specification



PRODUCT DETAILS

Product	10LB/1LB PRIME TUNA CO CHUNK MEAT
Product Code	TNPCO415BF
Grade	Prime
Latin Name	<i>Thunnus albacares</i>
UPC Number	006xxxxxxxxxxx
Catch Method	Wild Caught
Ingredients	Tuna treated with Carbon Monoxide [to promote color retention]
Allergen:	Fish [Tuna]
Raw Material	HGT/GG/WR tuna graded by colour, flavour, texture.

Size	-
Weight Range	1lb per IVP
Dimension	Length (2-15 cm); Width (2-8 cm); Thickness (0.3-1.5 cm)
Avg pieces/MC	10 pcs
Cut	Skinless Boneless
Glaze	None
Appearance	Uniform colour, red
Texture	Firm, resilient, moist
Smell	No off odours, no rancid

STORAGE CONDITIONS

Storage	0°F or < - 18°C (FIFO)
Shelf Life	24 months from production date (Frozen & closed)
Special Statement	Keep frozen. Do not re-freeze after thawing.
Thawing Instruction	Remove from packaging, thaw under refrigeration, and store below 38°F

Revision Number:	Last Modify By:
00	February 02, 2023



Product Specification

FINISHED GOODS MICROBIOLOGY/CHEMICAL SPECIFICATION

Standard	TARGET	ACTION LEVEL	UNIT
MICROBIAL STANDARDS			
Aerobic plate count (APC)	<100,000	>1,000,000	CFU/g
Coliform	<100	>1,000	CFU/g
Staphylococcus aureus	<10	50	CFU/g
Escherichia coli	Absent	10	CFU/g
Salmonella spp.	Absent	Present	/25g
Listeria monocytogenes	Absent	Present	CFU/g
CHEMICAL STANDARDS			
Histamine	<10	≥50	Ppm
Mercury	<1	≥1	Ppm

PACKAGING/LABELING INFORMATION

NUTRITIONAL INFORMATION

Unrounded Nutritional Facts (per 100g)	Amount	Measure
Calories	94	
Calories from Fat		
Total Fat	0.72	g
Saturated Fat	0.25	g
Trans Fat	<0.01	g
Cholesterol	33.9	mg
Sodium	46.2	mg
Total Carbohydrates	<0.3	g
Dietary Fiber	<0.1	g
Sugar	0	g
Added Sugar	0	g
Protein	21.8	g
Vitamin D	1.60	mcg
Calcium	3.97	mg
Iron	0.61	mg
Potassium	432.7	mg
Moisture	76.1	mg
Ash	1.3	mg

Packaging

1lb chunk meat is individually vacuumed and packed in 10 lbs. Master Carton

Inner Packaging

Food Grade IVP with thawing instruction attached.

Case Dimensions (O.D.)

Pizza Box 375*282*128 mm

Net Weight Labelling

10 lbs.
Label on master carton only

LOT CODE/TRACEABILITY

12345AXXXYY

12345 = The last five digit of PO numbers
A = Facility Code
XX = Product of (XX)
YY = Harvested In (YY)

Revision Number:	Last Modify By:
00	February 02, 2023