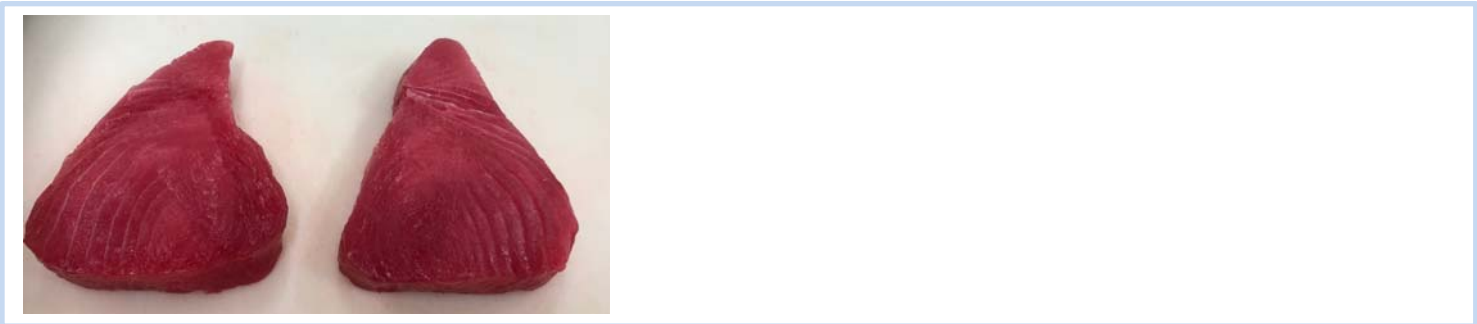




Product Specification



PRODUCT DETAILS

Product	10LB/6OZ PRIME TUNA CO STE
Product Code	TNPCO223BF
Grade	Prime
Latin Name	<i>Thunnus albacares</i>
ITF-14 Number	18994452120036
Catch Method	Wild Caught
Ingredients	Tuna treated with Carbon Monoxide [to promote color retention]
Allergen:	Fish [Tuna]
Raw Material	HGT/GG/WR tuna graded by colour, flavour, texture.
Size	6 oz
Weight Range	5.00-7.00 oz
Dimension	Thickness 0.8-1.2"
Total pieces/MC	22-33 pcs
Cut	Skinless Boneless
Glaze	None
Appearance	Uniform colour, red
Texture	Firm, resilient, moist
Smell	No off odours, no rancid

STORAGE CONDITIONS

Storage	0°F or < - 18°C (FIFO)
Shelf Life	24 months from production date (Frozen & closed)
Special Statement	Keep frozen. Do not re-freeze after thawing.
Thawing Instruction	Remove from packaging, thaw under refrigeration, and store below 38°F

Revision Number:	Last Modify By:
00	March 31, 2023



Product Specification

FINISHED GOODS MICROBIOLOGY/CHEMICAL SPECIFICATION

Standard	TARGET	ACTION LEVEL	UNIT
MICROBIAL STANDARDS			
Aerobic plate count (APC)	<100,000	>1,000,000	CFU/g
Coliform	<100	>1,000	CFU/g
Staphylococcus aureus	<10	50	CFU/g
Escherichia coli	Absent	10	CFU/g
Salmonella spp.	Absent	Present	/25g
Listeria monocytogenes	Absent	Present	CFU/g
CHEMICAL STANDARDS			
Histamine	<10	≥50	Ppm
Mercury	<1	≥1	Ppm

NUTRITIONAL INFORMATION

Unrounded Nutritional Facts (per 100g)	Amount	Measure
Calories	94	
Calories from Fat		
Total Fat	0.72	g
Saturated Fat	0.25	g
Trans Fat	<0.01	g
Cholesterol	33.9	mg
Sodium	46.2	mg
Total Carbohydrates	<0.3	g
Dietary Fiber	<0.1	g
Sugar	0	g
Added Sugar	0	g
Protein	21.8	g
Vitamin D	1.60	mcg
Calcium	3.97	mg
Iron	0.61	mg
Potassium	432.7	mg
Moisture	76.1	mg
Ash	1.3	mg

PACKAGING/LABELING INFORMATION

Packaging

6oz steak is individually vacuumed and packed in 10 lbs. Master Carton

Inner Packaging

Food Grade IVP with thawing instruction attached.

Case Dimensions (O.D.)

320*255*150 mm

Net Weight Labelling

10 lbs.
Label on master carton only

LOT CODE/TRACEABILITY

XXZYY23001

XX = Product of (XX)
Z = Plant Code (Z)
YY = Harvested In (YY)
23 = 2 last digit of Year
001 = OP's sequence

Revision Number:	Last Modify By:
00	March 31, 2023